



eVent BIO Series

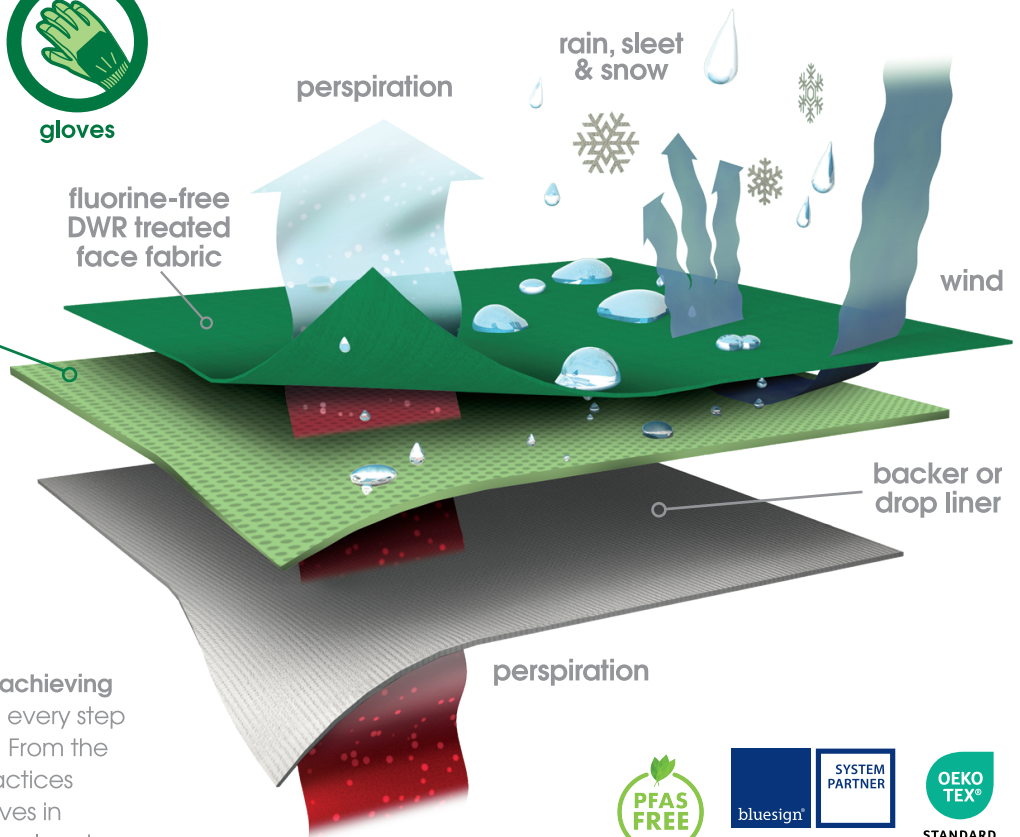
Waterproof and planet positive. Our bio-based membrane technology uses sustainable materials to provide the all-weather protection and performance users have come to expect from eVent fabrics. This membrane technology uses bio-based resins to create 100% waterproof and windproof protection.

The technology is derived from highly renewable plant-based sources. Light, tough and flexible, the BIO membrane has a reduced carbon footprint and is recyclable when it reaches the end of its lifecycle.

eVent BIO is purpose-made for a variety of end-use applications. We have incorporated the technology into apparel, footwear and glove products laminated with recycled and other smartly sourced fabrics with high moisture transfer rates (MVTR), stretch comfort and durability ideal for many adventures.



eVent BIO Membrane
BIO-based membrane provides all-weather protection and a high MVTR



eVent fabrics is committed to achieving **sustainability and circularity** in every step of our manufacturing process. From the materials we source to the practices in our production, eVent believes in eco-friendly textiles for a better planet.



eVent BIO for Apparel



Features:

- Sustainable laminate solution
- 100% waterproof & windproof
- Lightweight with stretch comfort
- Soft drape & hand feel
- Fluorine-free DWR

Laminate Specs:

WP (ISO 811): 20,000mm water column

MVTR (JIS L 1099 B1): Min 20,000 g/m²/24hrs
Targeting 25,000-30,000 g/m²/24hrs

Weight: range 130-270g/m²

eVent BIO for Footwear



Features:

- Sustainable laminate solution
- 100% waterproof before & after flex
- Good abrasion strength
- Suitable for bootie or gasket construction

Laminate Specs:

WP (ISO 811):
20,000mm water column initial

WP (ISO 811) after 50,000 flex:
> 10,000mm water column

MVTR (JIS L 1099 B1):
range 8,000-12,000 g/m²/24hrs

eVent BIO Glove Inserts



Features:

- Sustainable insert solution
- 100% waterproof and windproof
- High MVTR to minimize clammy hands
- Increased durability over low cost solutions
- Available in 2L and 3L and multiple sizes

Insert Specs:

WP (ISO 811):
range 10,000-20,000 mm water column

MVTR (JIS L1 1099 B1):
range 10,000-20,000 g/m²/24hrs

Weight (ASTM D3776): range 39-60 g/m²

Weld strength (ISO 527 Pf3): >7 N/cm