

WE ARE

SANFANG  
CHEMICAL



KAOHSIUNG CITY, TAIWAN



# LSCHYS<sup>®</sup>

THE ONLY THING THAT REMAINS UNCHANGED IS CHANGE



# LSCHYS<sup>®</sup> SERIES

FILM & ADHESIVE

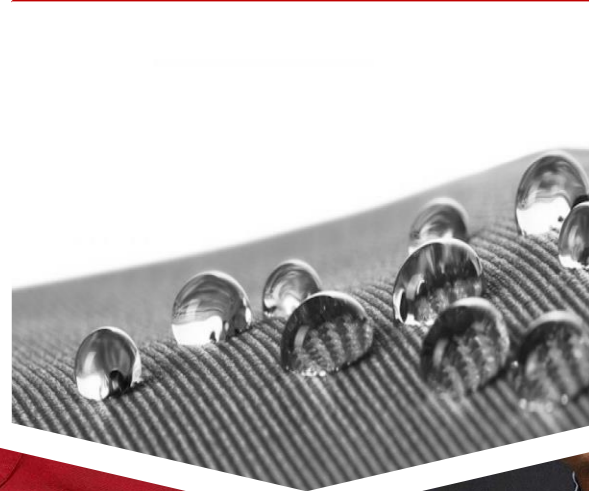
NON-STRETCH HOT MELT



ELASTIC HOT MELT



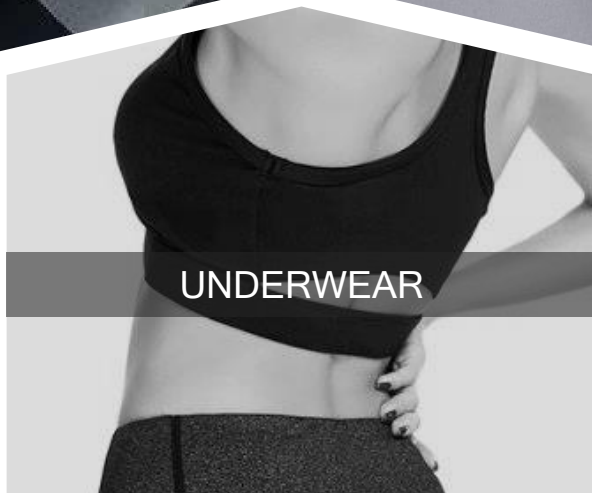
SEAM SEALING TAPE



DECORATION TAPE



UNDERWEAR



OUTDOOR WEAR



SPORTSWEAR



# LSCHYS<sup>®</sup>

## NON-STRETCH HOTMELT SERIES

### Excellent Bonding Performance

## APPLICATIONS

For Outdoor & Woven Fabric & Performance Wear

	<b>ASTM D882 4.0~5.0N</b>	<b>ASTM D882 4.5~5.5N</b>	<b>ASTM D882 4.5~5.5N</b>
	<b>LOW TEMP</b> <hr/> <b>W241</b>	<b>HI TEMP</b> <hr/> <b>W031</b>	<b>MEDIUM TEMP</b> <hr/> <b>W650</b>
Thickness	0.05, 0.07, 0.1, 0.15	0.05, 0.07, 0.1	0.05, 0.07, 0.1, 0.15
Composition	30% recycled TPU 70% virgin TPU	100% TPE	30% recycled TPU 70% virgin TPU
Operation Temp	120°C - 140°C	180°C - 200°C	120°C - 150°C
Home Laundering	Up to 60°C	Up to 60°C	Up to 60°C
AATCC 135	25-time wash	25-time wash	25-time wash

Strong Bonding Strength

# USE ME AS A PRO

# LIGHTWEIGHT

PLACKET



ZIPPER



REINFORCEMENT



HOODIE BRIMS



# LSCHYS<sup>®</sup>

## ELASTIC HOTMELT SERIES

Low Temp

Advanced

**E936**

**Thickness**  
0.05, 0.07, 0.10 mm

**Composition**

30% recycled TPU  
70% virgin TPU

**Recovery Rate**

95%

**Actual Temp**

130°C - 160°C

**Home Laundering**

Up to 60°C

Elongation

Extreme Stretch

**E832**

**Thickness**  
0.05, 0.07, 0.10 mm

**Composition**  
30% recycled TPU  
70% virgin TPU

**Recovery Rate**  
95%

**Actual Temp**  
150°C - 170°C

**Home Laundering**  
Up to 60°C

Low Temp

Medium

**E932**

**Thickness**  
0.05, 0.07, 0.10 mm

**Composition**  
30% recycled TPU  
70% virgin TPU

**Recovery Rate**  
93%

**Actual Temp**  
130°C - 160°C

**Home Laundering**  
Up to 60°C



Soft High Elongation Hot melt film

# USE ME AS A PRO

# LEGGINGS

## OVER SIZE YOGA PANTS



**S900**

### Soft waistband

- 1. particular soft hand feel
- 2. Extreme extension

**SP932**

### Breathability

- 1. Breathable comfort
- 2. close-fitting support

## WAIST SUPPORT & ELASTIC CORSET



**VE241**

### Non-Constricting

- 1. Elongation along with fabric
- 2. Unlimited Coverage
- 3. Strong bonding strength

**E936**

### Embody Flexibility

- 1. sensitive fabrics and natural fabric
- 2. Lower temperature
- 3. Solution for color migration, heating mark,

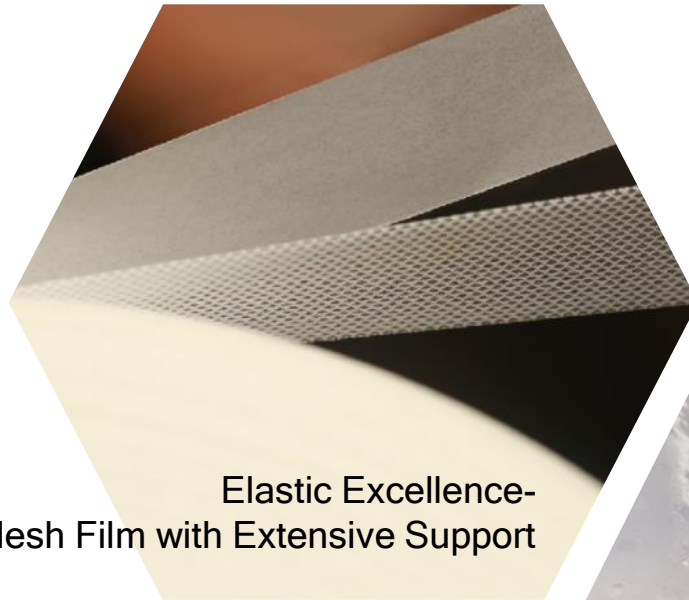


Innovative Metrix

# USE ME AS A PRO

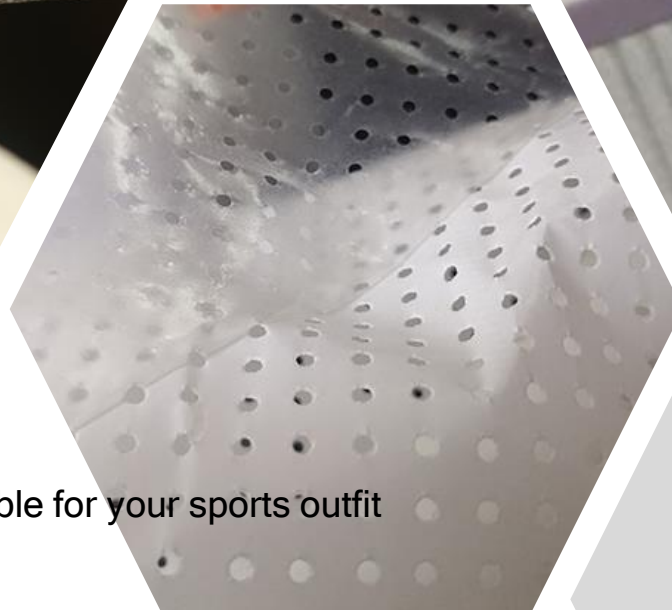
# DIVERSITY

SD632



Super breathable for your sports outfit

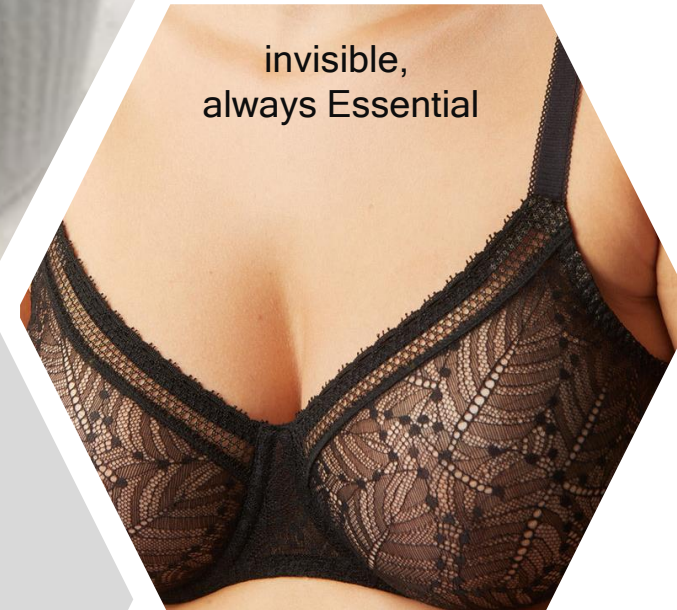
SP932



LA600



C832





High Elastic Hot melt film

# USE ME AS A PRO

# BRA

## LIGHT-SUPPORT BRA



**SP932**

### Breathability

1. Under bust
2. Breathable comfort

## SPORTS TOP

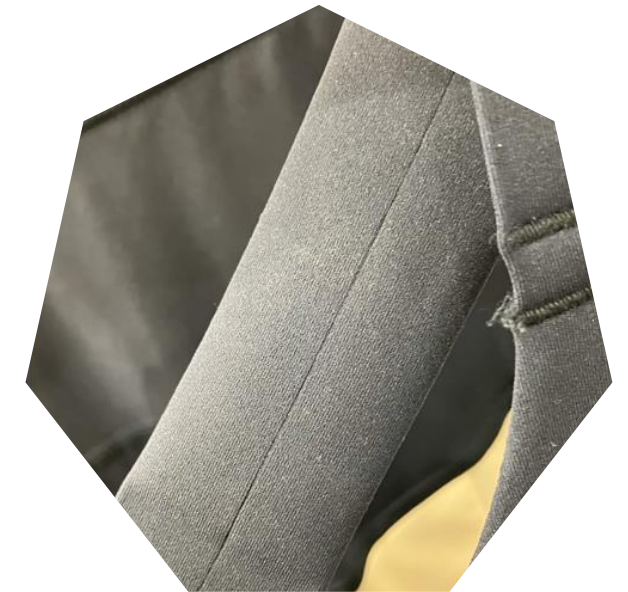


**E936**

### Embody Flexibility

1. sensitive fabrics and natural fabric
2. Lower temperature
3. Solution for color migration, heating mark

## SPORTS BRA



**SD632**

### Supportive strap

1. 99% elastic recovery

**VE241**

### Non-Constricting

1. Cuff, collar
2. Unlimited Coverage
3. Strong bonding strength

# LSCHYS<sup>®</sup>

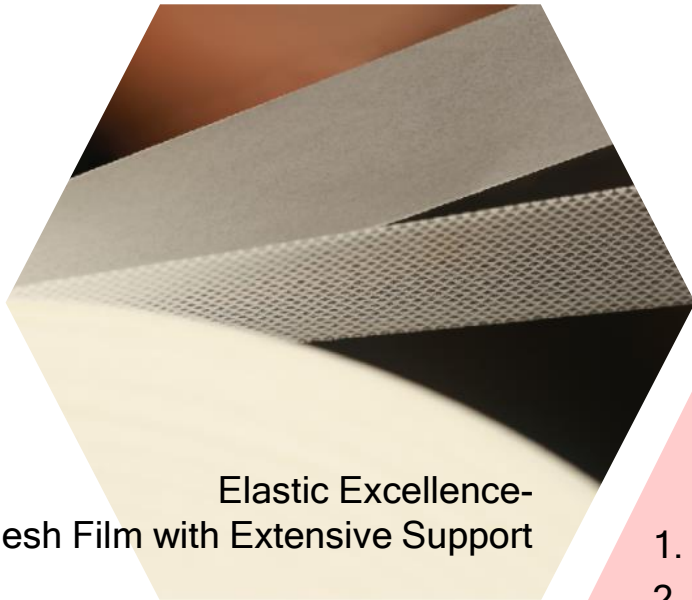
## ADVANCED BONDING SOLUTION

	<b>Spandex</b>	<b>Perforated</b>	<b>Ladder</b>	<b>Colorway</b>
	<b>Elastic</b>	<b>Breathability</b>	<b>Fashion</b>	<b>Invisible</b>
	<b>SD632</b>	<b>SP932</b>	<b>LA600</b>	<b>C832</b>
<b>Thickness</b>	0.20 mm	0.10, 0.15, 0.2 mm	0.05, 0.07, 0.10 mm	0.05, 0.07, 0.10 mm
<b>Composition</b>	TPU+Spandex	30% recycled TPU 70% virgin TPU	30% recycled TPU 70% virgin TPU	30% recycled TPU 70% virgin TPU
<b>Recovery Rate</b>	99%	93%	97%	95%
<b>Actual Temp</b>	140°C - 160°C	130°C - 160°C	130°C - 150°C	150°C - 170°C
<b>Home Laundering</b>	Up to 60°C	Up to 60°C	Up to 60°C	Up to 60°C

Mesh Film with Extensive Support

# USE ME AS A PRO

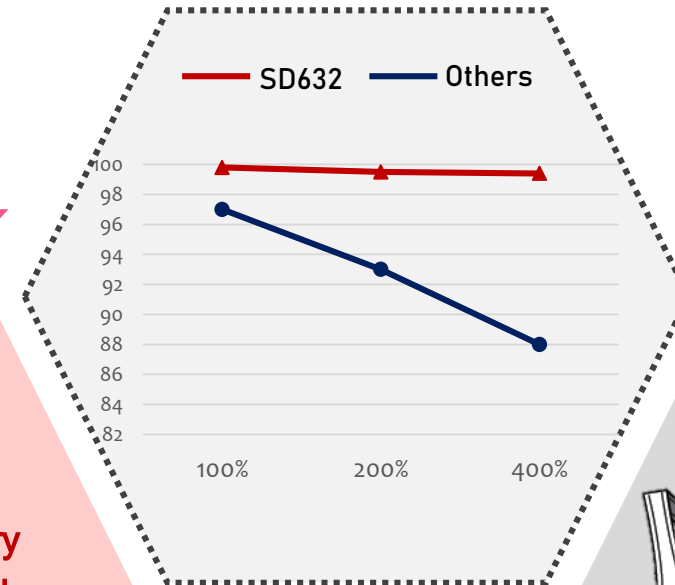
# SD632



## FEATURES

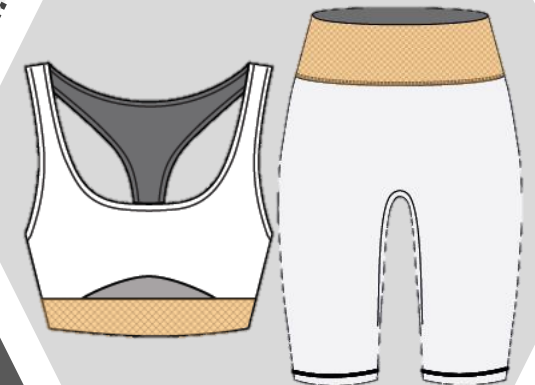
1. Excellent **elastic recovery**
2. Elastic recovery **sustain longer**
3. **Thinnest thickness** in the market: 0.18, 0.2 mm

## Durable Elastic Recovery



## APPLICATION

Under bust / Waistband



SANFANG APPAREL

# PERFORATED ADHESIVE FILM

Concentrated Perforation Hole

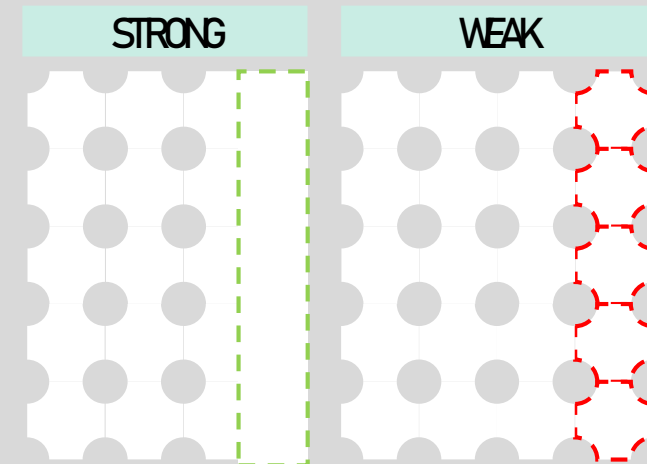
SP932 / SP632

## FEATURES

- ✓ Combines high breathability,
- ✓ suitable for areas prone to heat buildup,
- ✓ no gaps after stretching,
- ✓ no jagged edges
- ✓ does not affect bonding strength
- ✓ providing a more comfortable and lightweight wearing experience for your garments.

- customizable width
- customizable diameter

Wing / Cradle / Band / Hem



LSCHYS®

Perforated adhesive

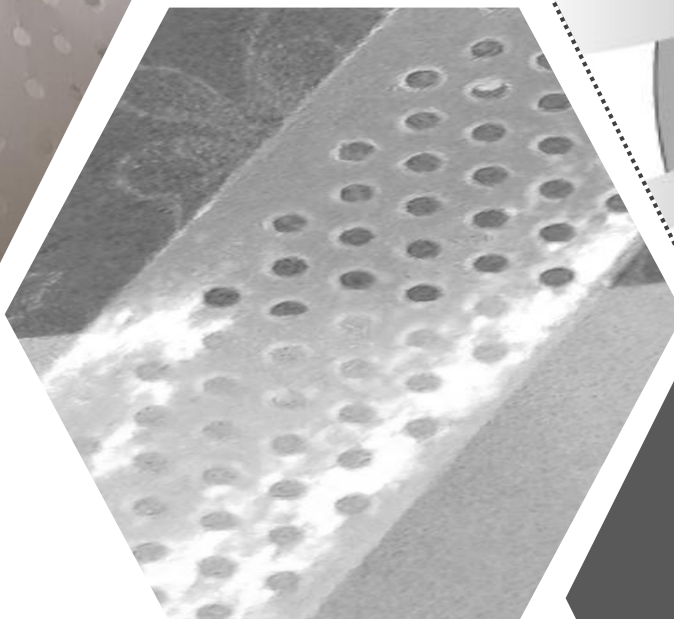
# USE ME AS A PRO

# SP932

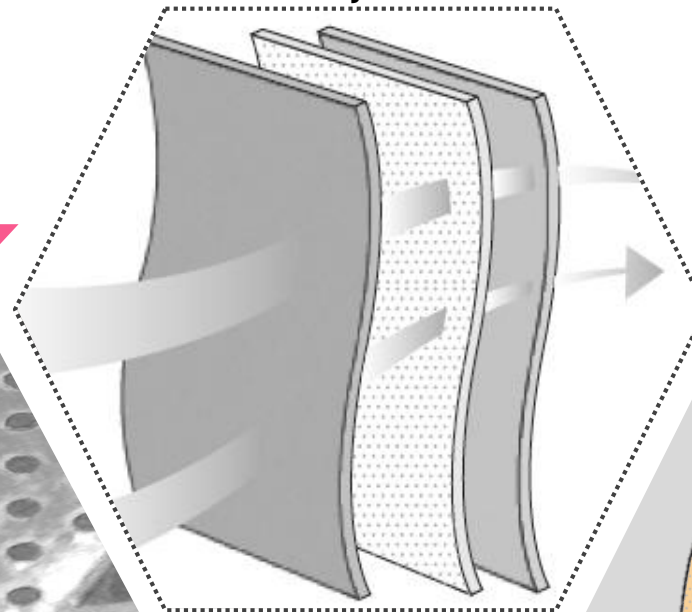


Super breathable for your sports outfit

## FEATURES



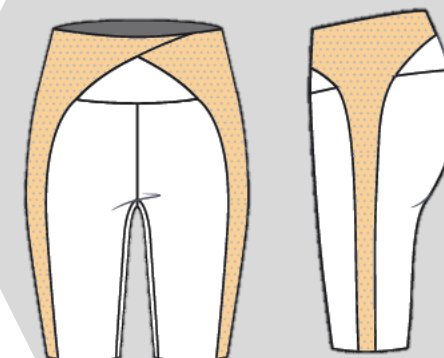
## Breathability Excellence



1. customizable width
2. customizable diameter

## APPLICATION

Wing / Cradle / Band / Hem



# USE ME AS A PRO

# LA600

## Band Replacement



## FEATURES

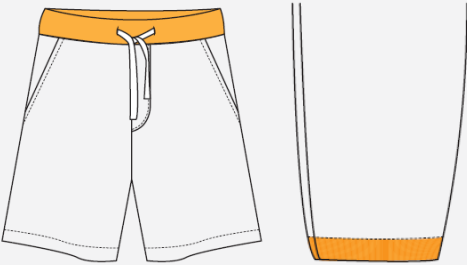


Seamlessly laminate for a flawless, flexible finish



## APPLICATION

Skirt Straps / Sleeves / Collars



SANFANG APPAREL

# LACE FABRIC ADHESIVE

Colored version of adhesive film

C832 / C932

Visually appealing,  
seamless design that  
enhances both the value  
and quality of the  
product.



8-COLOR OPTIONS



LSCHYS®

SANFANG APPAREL

# GEL GLUE

ZEROTOUCH

E909

**SUPERIOR COMFORT**

**OPTIMAL FLEXIBILITY**

**ENHANCED DURABILITY**

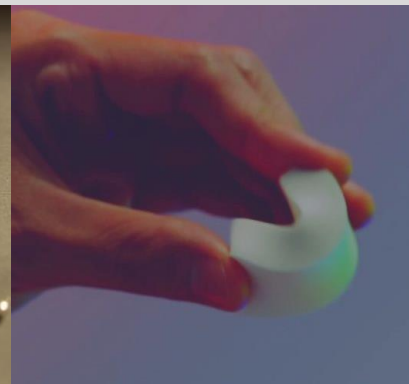
**VERSATILE APPLICATION**

Cushion effect by its' soft texture

Comfortable elongation and low modulus properties easy to put on and take off,

E909 maintains its cushioning and flexibility through multiple wear and wash cycles





E909 is ideal for a wide range of garments, from everyday wear to active wear



**LSCHYS<sup>®</sup>**



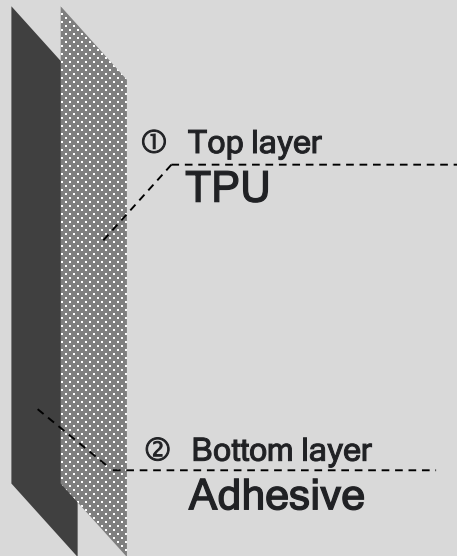
# DECORATION

	SPECIFICATION	APPLICATION	EFFECT COLLECTION
Thickness	<b>D200</b> 0.1/ 0.15/ 0.2 mm	 LOGO	 PEARLIZED
Heating Press Condition	Suggested 110 – 140 °C 3 – 5 kg/cm <sup>2</sup> 30 s	 POCKET	 CHAMELEON
Decoration tape not only give your outfits variety colors, but also offer a green solution (water-base PU layer)		 SUPPORT	 MORPHO
		 ANTI-SLIPPERY	 METAL
			 <b>LSCHYS®</b> GLASSINE
			 TRANSLUCENT

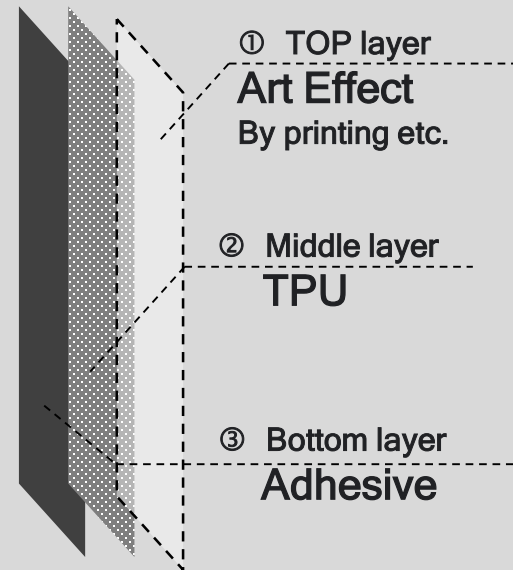
**LSCHYS<sup>®</sup>**

SEAM SEALING SERIES **STRUCTURAL BREAKDOWN**

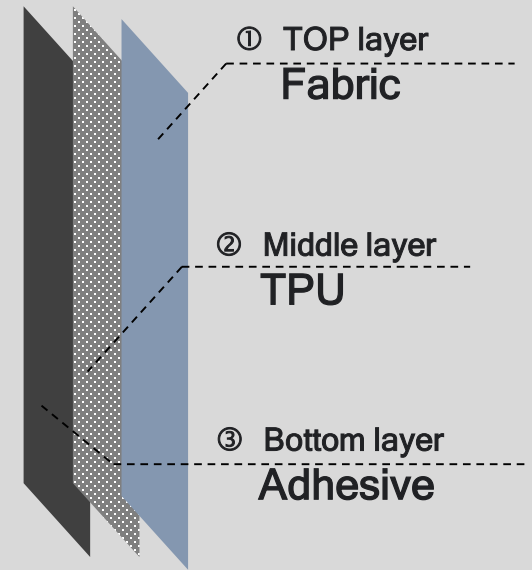
**2L**



**2.5L<sub>DECORATIVE</sub>**



**3L<sub>DECORATIVE</sub>**



**LSCHYS<sup>®</sup>**

# SEAM SEALING SERIES



**Thickness**

**Composition**

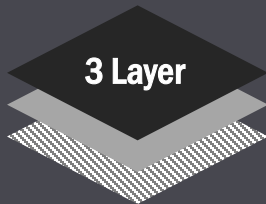
**Home Laundering**

**FABRIC**

**MMF241**

0.38 mm

100% TPU+fabric



3 Layer

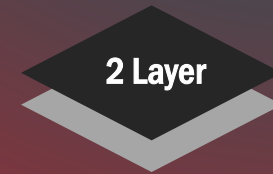
Up to 40°C

**PREMIUM**

**MME010**

0.09, 0.12, 0.18mm

100% virgin TPU



2 Layer

Up to 40°C

Broad service range to fabric

**APPLICABLE**

Finer denier fabric (Down to 20D)  
2 and 2.5 layers Nylon fabric or  
PET fabric with PFC free DWR material

**PERFORMANCE**

ASTM 127 / ISO 811  
Hydrostatic Resistance 5,000mmH<sub>2</sub>O+  
(After 15 cycle wash)

# COLLECTIONS HIGHLIGHTED

## SANFANG MODELS

## FEATURES

## HIGHLIGHTS

## SUITABLE FABRICS

## APPLICATION

**E932**

**High**  
elastic recovery

Low temperature  
Strong bonding

95% Cotton +5% spandex  
75% rPoly + 25% spandex  
81% Nylon + 19% spandex

Temperature sensitive fabric  
natural compound fabric

**E832**

**High**  
elastic recovery

Medium temperature  
Strong bonding

75% rPoly + 25% Spandex  
80% Nylon +20 Spandex

High temperature molding  
Bra molding

**S900**

**Soft & high**  
elastic recovery

Low temperature  
Strong bonding

75% rPoly + 25% Spandex  
80% Nylon +20 Spandex

Waist, free size leggings  
hem

**SD632**

**Extremely high**  
elastic recovery

Low temperature  
Strong bonding

100% Cotton  
95% Cotton +5% Spandex

Under bust  
supportive

**VE615**

**Medium**  
elastic recovery

Low temperature  
supportive

75% rPoly + 25% Spandex  
80% Nylon +20 Spandex

Medium knitting fabric  
Hem, edge, strap

**VE632**

**High**  
elastic recovery

Medium temperature  
Strong bonding

75% rPoly + 25% Spandex  
80% Nylon +20 Spandex

Medium knitting fabric  
Hem, edge, strap

**W241**

**Strong Bonding**  
adhesive

Low temperature  
Strong bonding

95% rPoly + 5% Spandex  
80% Nylon +20 Spandex

Zipper lamination  
50D water repellent fabric

**W031**

**Strong Bonding**  
adhesive

High temperature  
Strong bonding

20D CO fabrics  
Water-repellant fabrics

Down jacket  
30D lightweight fabric